



시험성적서 번호 F690101/LF-CTSAYAA19-29046K

발행일: 2019. 05. 09    페이지: 1/ 4

고 객 명 : 정우케미칼  
주 소 : 경기 평택시 청북면 백봉길 314-63



고객으로부터 제공받은 시료에 대한 정보는 다음과 같습니다.

SGS 파일 번호 : AYAA19-29046K  
제 품 명 : J-279 금형 특수방청제  
아 이 템 번 호 : N/A  
시료 접수 날짜 : 2019. 05. 03  
시험 시행 기간 : 2019. 05. 03 ~ 2019. 05. 09  
제 출 처 : 삼성전자(주),LGD  
시 험 결 과 : 자세한 결과는 다음 장을 참조하세요.

한국에스지에스 (주)

오 갑 현 / 기술책임자

This document is issued by the Company subject to its General Conditions of Service printed overleaf, available on request or accessible at <http://www.sgs.com/en/Terms-and-Conditions.aspx> and, for electronic format documents, subject to Terms and Conditions for Electronic Documents at [www.sgs.com/terms\\_e-document.htm](http://www.sgs.com/terms_e-document.htm) [http://www.sgs.com/terms\\_e-document.htm](http://www.sgs.com/terms_e-document.htm). Attention is drawn to the limitation of liability, indemnification and jurisdiction issues defined therein. Any holder of this document is advised that information contained hereon reflects the Company's findings at the time of its intervention only and within the limits of Client's instructions, if any. The Company's sole responsibility is to its Client and this document does not exonerate parties to a transaction from exercising all their rights and obligations under the transaction documents. This document cannot be reproduced except in full, without prior written approval of the Company. Any unauthorized alteration, forgery or falsification of the content or appearance of this document is unlawful and offenders may be prosecuted to the fullest extent of the law. Unless otherwise stated the results shown in this test report refer only to the sample(s).



시험성적서 번호 F690101/LF-CTSAYAA19-29046K

발행일: 2019. 05. 09    페이지: 2/ 4

시 료 번 호 : AYAA19-29046K.001  
시 료 명 : J-279 금형 특수방청제  
아 이 템 번 호 : N/A  
재 질 : N/A

Heavy Metals

| 분 석 항 목                      | 단 위   | 시 험 방 법  | 검출한계 | 결 과 |
|------------------------------|-------|--|------|-----|
| Cadmium (Cd)                 | mg/kg | With reference to IEC 62321-5:2013<br>(Determination of Cadmium by ICP-OES)  | 0.5  | 불검출 |
| Lead (Pb)                    | mg/kg | With reference to IEC 62321-5:2013<br>(Determination of Lead by ICP-OES)   | 5    | 불검출 |
| Mercury (Hg)                 | mg/kg | With reference to IEC 62321-4:2013<br>(Determination of Mercury by ICP-OES)  | 2    | 불검출 |
| Hexavalent Chromium (Cr VI)* | mg/kg | With reference to IEC 62321-7-2:2017,<br>determination of Hexavalent Chromium by<br>Colorimetric Method using UV-Vis and Microwave<br>system/or with reference to IEC 62321-5:2013,<br>determination of Chromium by ICP-OES. | 8    | 불검출 |

Flame Retardants-PBBs/PBDEs

| 분 석 항 목                 | 단 위   | 시 험 방 법  | 검출한계 | 결 과 |
|-------------------------|-------|--|------|-----|
| Monobromobiphenyl       | mg/kg | With reference to IEC 62321-6:2015<br>(Determination of PBBs and PBDEs by GC-MS) | 5    | 불검출 |
| Dibromobiphenyl         | mg/kg | With reference to IEC 62321-6:2015<br>(Determination of PBBs and PBDEs by GC-MS) | 5    | 불검출 |
| Tribromobiphenyl        | mg/kg | With reference to IEC 62321-6:2015<br>(Determination of PBBs and PBDEs by GC-MS) | 5    | 불검출 |
| Tetrabromobiphenyl      | mg/kg | With reference to IEC 62321-6:2015<br>(Determination of PBBs and PBDEs by GC-MS) | 5    | 불검출 |
| Pentabromobiphenyl      | mg/kg | With reference to IEC 62321-6:2015<br>(Determination of PBBs and PBDEs by GC-MS) | 5    | 불검출 |
| Hexabromobiphenyl       | mg/kg | With reference to IEC 62321-6:2015<br>(Determination of PBBs and PBDEs by GC-MS) | 5    | 불검출 |
| Heptabromobiphenyl      | mg/kg | With reference to IEC 62321-6:2015<br>(Determination of PBBs and PBDEs by GC-MS) | 5    | 불검출 |
| Octabromobiphenyl       | mg/kg | With reference to IEC 62321-6:2015<br>(Determination of PBBs and PBDEs by GC-MS) | 5    | 불검출 |
| Nonabromobiphenyl       | mg/kg | With reference to IEC 62321-6:2015<br>(Determination of PBBs and PBDEs by GC-MS) | 5    | 불검출 |
| Decabromobiphenyl       | mg/kg | With reference to IEC 62321-6:2015<br>(Determination of PBBs and PBDEs by GC-MS) | 5    | 불검출 |
| Monobromodiphenyl ether | mg/kg | With reference to IEC 62321-6:2015<br>(Determination of PBBs and PBDEs by GC-MS) | 5    | 불검출 |
| Dibromodiphenyl ether   | mg/kg | With reference to IEC 62321-6:2015<br>(Determination of PBBs and PBDEs by GC-MS) | 5    | 불검출 |

This document is issued by the Company subject to its General Conditions of Service printed overleaf, available on request or accessible at <http://www.sgs.com/en/Terms-and-Conditions.aspx> and, for electronic format documents, subject to Terms and Conditions for Electronic Documents at [www.sgs.com/terms\\_e-document.htm](http://www.sgs.com/terms_e-document.htm) - [http://www.sgs.com/terms\\_e-document.htm](http://www.sgs.com/terms_e-document.htm). Attention is drawn to the limitation of liability, indemnification and jurisdiction issues defined therein. Any holder of this document is advised that information contained hereon reflects the Company's findings at the time of its intervention only and within the limits of Client's instructions, if any. The Company's sole responsibility is to its Client and this document does not exonerate parties to a transaction from exercising all their rights and obligations under the transaction documents. This document cannot be reproduced except in full, without prior written approval of the Company. Any unauthorized alteration, forgery or falsification of the content or appearance of this document is unlawful and offenders may be prosecuted to the fullest extent of the law. Unless otherwise stated the results shown in this test report refer only to the sample(s).



시험성적서 번호 F690101/LF-CTSAYAA19-29046K

발행일: 2019. 05. 09    페이지: 3/ 4

시 료 번 호 : AYAA19-29046K.001  
시 료 명 : J-279 금형 특수방청제  
아 이 템 번 호 : N/A  
재 질 : N/A

Flame Retardants-PBBs/PBDEs

| 분 석 항 목                  | 단 위   | 시 험 방 법  | 검출한계 | 결 과 |
|--------------------------|-------|--|------|-----|
| Tribromodiphenyl ether   | mg/kg | With reference to IEC 62321-6:2015<br>(Determination of PBBs and PBDEs by GC-MS) | 5    | 불검출 |
| Tetrabromodiphenyl ether | mg/kg | With reference to IEC 62321-6:2015<br>(Determination of PBBs and PBDEs by GC-MS) | 5    | 불검출 |
| Pentabromodiphenyl ether | mg/kg | With reference to IEC 62321-6:2015<br>(Determination of PBBs and PBDEs by GC-MS) | 5    | 불검출 |
| Hexabromodiphenyl ether  | mg/kg | With reference to IEC 62321-6:2015<br>(Determination of PBBs and PBDEs by GC-MS) | 5    | 불검출 |
| Heptabromodiphenyl ether | mg/kg | With reference to IEC 62321-6:2015<br>(Determination of PBBs and PBDEs by GC-MS) | 5    | 불검출 |
| Octabromodiphenyl ether  | mg/kg | With reference to IEC 62321-6:2015<br>(Determination of PBBs and PBDEs by GC-MS) | 5    | 불검출 |
| Nonabromodiphenyl ether  | mg/kg | With reference to IEC 62321-6:2015<br>(Determination of PBBs and PBDEs by GC-MS) | 5    | 불검출 |
| Decabromodiphenyl ether  | mg/kg | With reference to IEC 62321-6:2015<br>(Determination of PBBs and PBDEs by GC-MS) | 5    | 불검출 |

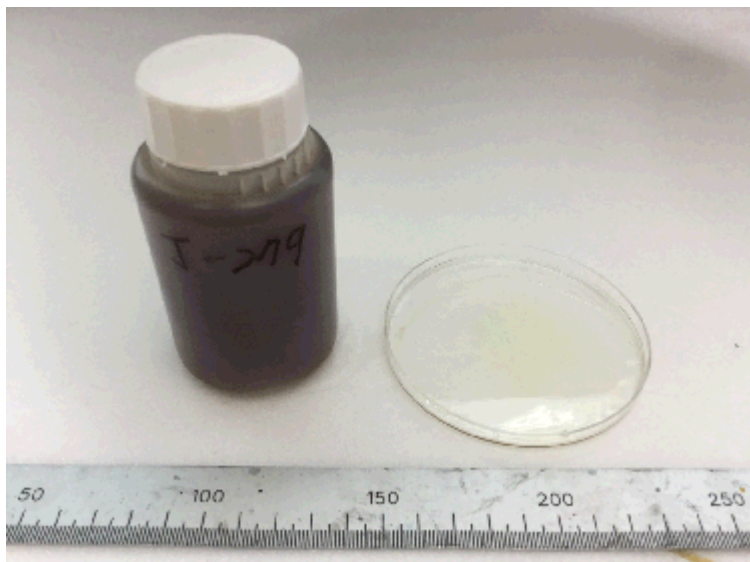
Halogen Content

| 분 석 항 목      | 단 위   | 시 험 방 법                             | 검출한계 | 결 과 |
|--------------|-------|-------------------------------------|------|-----|
| Bromine(Br)  | mg/kg | With reference to EN 14582:2016, IC | 30   | 불검출 |
| Chlorine(Cl) | mg/kg | With reference to EN 14582:2016, IC | 30   | 불검출 |

- 주) (1) 불검출 : 검출한계 미만  
(2) \*= a. 총 크롬이 불검출이면 육가크롬(CrVI) 불검출.  
b. 총 크롬이 8 mg/kg 이상이면, 육가크롬(CrVI) 확인 시험.

This document is issued by the Company subject to its General Conditions of Service printed overleaf, available on request or accessible at <http://www.sgs.com/en/Terms-and-Conditions.aspx> and, for electronic format documents, subject to Terms and Conditions for Electronic Documents at [www.sgs.com/terms\\_e-document.htm](http://www.sgs.com/terms_e-document.htm) [http://www.sgs.com/terms\\_e-document.htm](http://www.sgs.com/terms_e-document.htm). Attention is drawn to the limitation of liability, indemnification and jurisdiction issues defined therein. Any holder of this document is advised that information contained hereon reflects the Company's findings at the time of its intervention only and within the limits of Client's instructions, if any. The Company's sole responsibility is to its Client and this document does not exonerate parties to a transaction from exercising all their rights and obligations under the transaction documents. This document cannot be reproduced except in full, without prior written approval of the Company. Any unauthorized alteration, forgery or falsification of the content or appearance of this document is unlawful and offenders may be prosecuted to the fullest extent of the law. Unless otherwise stated the results shown in this test report refer only to the sample(s).

접수된 시료의 사진 :



**AYAA19-29046K.001**

\*\*\* 끝 \*\*\*

This document is issued by the Company subject to its General Conditions of Service printed overleaf, available on request or accessible at <http://www.sgs.com/en/Terms-and-Conditions.aspx> and, for electronic format documents, subject to Terms and Conditions for Electronic Documents at [www.sgs.com/terms\\_e-document.htm](http://www.sgs.com/terms_e-document.htm) [http://www.sgs.com/terms\\_e-document.htm](http://www.sgs.com/terms_e-document.htm). Attention is drawn to the limitation of liability, indemnification and jurisdiction issues defined therein. Any holder of this document is advised that information contained hereon reflects the Company's findings at the time of its intervention only and within the limits of Client's instructions, if any. The Company's sole responsibility is to its Client and this document does not exonerate parties to a transaction from exercising all their rights and obligations under the transaction documents. This document cannot be reproduced except in full, without prior written approval of the Company. Any unauthorized alteration, forgery or falsification of the content or appearance of this document is unlawful and offenders may be prosecuted to the fullest extent of the law. Unless otherwise stated the results shown in this test report refer only to the sample(s).